

Leading the way in cable trunking

For all products and sales...

call 01793 611777

fax 01793 615500



## Under Floor Trunking

Flytec underfloor trunking is designed for placing on the constructional concrete slab, to be completely covered when the final floor screed is laid and the service outlet positions fixed.



E2/61 2 Compartment Size 150mm x 25mm

E2/62 2 Compartment Size 150mm x 50mm



E3/91 3 Compartment Size 225mm x 25mm

E3/92 3 Compartment Size 225mm x 50mm

- Steel underfloor trunking manufactured in 2 metre lengths. Two or three compartment are most commonly used. Single or other numbers of compartments can also be supplied.
- The trunking lengths are a total welded construction with no need to couple together loose channel sections.
- Each length is joined together by a saddle clamp and plate, which prevent any ingress of screed into the duct.

### 2 Compartment Service Outlet Box

Supplied in through or end of run format only

- Part number E2/SB/1TS supplied with one RJ45 plate and a panel mounted dual earth twin switched socket. (Add trunking size to above part number)
- 75mm deep as standard, other depths available.

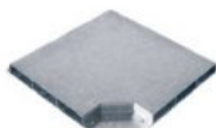


E2//SB//1TS 2 compartment service box

## Accessories



ISB Riser bend



HL Flat bend



ISB/BE Riser bend



EC End cap



CONN Connector plate

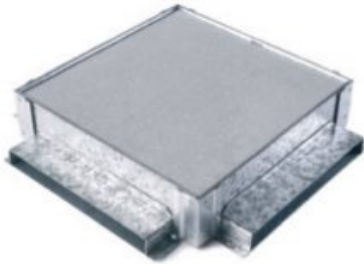


ES99 Earth link

### Junction Boxes

- Part number UF/JB (75mm deep as standard, other depths available)
- Junction boxes are supplied with flange couplers and blank plates to enable use as angles, tees or 4 way.
- Each box is complete with fly-over for cable segregation.
- Carpet recess is 6mm

**Note: Junction boxes cannot be used to house sockets or data outlets**



**UF/JB Junction box**

### 3 Compartment Service Outlet Box

Supplied in through or end of run format only

- Part number E3/SB/1TS supplied with one RJ45 plate, a blank plate and a panel mounted dual earth twin switched socket. (Add trunking size to above part number)
- 75mm deep as standard, other depths available.
- Additional sockets or a variation of plates can be supplied on request.
- Carpet trim and lid assembly manufactured in a tough plastic moulding which has two individual hinged cable outlets colour dark grey. The lid is reinforced by a 3mm steel plate. Carpet recess is 6mm.



**E3/SB/1TS 3 compartment service box**