

Leading the way in cable trunking

For all products and sales...

call 01793 611777

fax 01793 615500



D6 Flush Floor Trunking Service Outlet Systems

Flytec flush floor trunking is supplied in 2 metre lengths. 400mm lengths of removable lid are fitted which are interchangeable with a service outlet box of the same length, thus giving the designer flexibility of positioning within a screeded floor installation.

- Lids manufactured from 3mm thick galvanised steel are fixed to the trunking body by countersunk zinc plated steel turnbuckle fasteners, providing speed of fitting by the installer and maximum rigidity of the finished product.
- Two or Three compartments available.
- It is advisable that all lid sections are fitted during screeding. This will prevent any slight inward movement to the sides of trunking body

We recommend that Flytec flush floor trunking is installed on a ribbon screed or similar to ensure support along the entire length and width of the system.



D6/C/15 2 Compartment Size 235 x 65



D6/C/16 3 Compartment Size 330 x 65

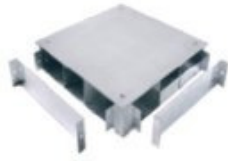
2 Compartment Service Outlet Box

- Designed to fit into the trunking anywhere along the system layout excluding junction points. Part number D6/C15-SB/1TS
- Supplied with one RJ45 plate and a panel mounted dual earth twin switched socket

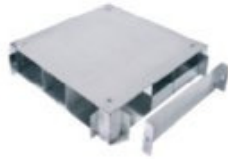


D6/C/15-SB/1TS 2 compartment service box

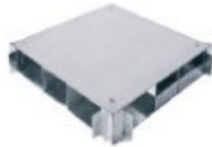
Accessories



ASL Angle junction box



AST Tee junction box



ASX Crossover junction box



ISB Riser bend



**ISB/BE Riser bend
back entry to skirting**



EC Stop end

3 Compartment Service Outlet Box

- Designed to fit into the trunking anywhere along the system layout excluding junction points. Part number D6/C16-SB/1TS
- Supplied with one RJ45 plate, a blank plate and a panel mounted dual earth twin switched socket
- Additional sockets or a variation of plates can be supplied on request.
- Carpet trim and lid assembly manufactured in a tough plastic moulding which has two individual hinged cable outlets colour dark grey. The lid is reinforced by a 3mm steel plate. Carpet recess is 6mm.



D6/C16-SB/1TS 3 compartment service box

For ordering details just prefix the trunking part number with the accessory reference.